



馬景記
Ma King Kee

Company Profile

www.makingkee.com





馬景記
Ma King Kee

About us

Company Profile

Since 1950, Ma King Kee has delivered reliable reprographic solutions across Hong Kong and Macau. With 10 branches and 100+ team members, we combine decades of expertise with modern efficiency to ensure high-quality products and prompt service for every client.

Customer-centric by design, we prioritize their needs above all—understanding that their success drives ours. This philosophy guides our commitment to adaptability, precision, and consistent excellence, making us the partner of choice for over 70 years.





馬景記
Ma King Kee

Our Service

We provide precision reprographic solutions:

- Large Format Photocopying
- Digital Document Output
- High-Quality Printing
- Wide Format Scanning
- Color Imaging
- Microfilm Conversion

Agile & adaptive, we align with market needs and anticipate client demands—evolving our services to stay ahead of industry trends.

Our team combines expertise and dedication, delivering seamless service through responsibility, collaboration, and a focus on your success.





馬景記
Ma King Kee

Internal Service

Large-Format Solutions: Strategic partnerships with HP and Canon enable us to deliver precision B&W and color outputs using their flagship technologies, ensuring innovation and reliability for large-scale projects.

Small-Format Expertise: Collaborations with Fujifilm, Canon, and HP offer end-to-end services—from everyday B&W / Color copying to professional-grade outputs like tender documents, reports, and impactful color displays—tailored to diverse needs.

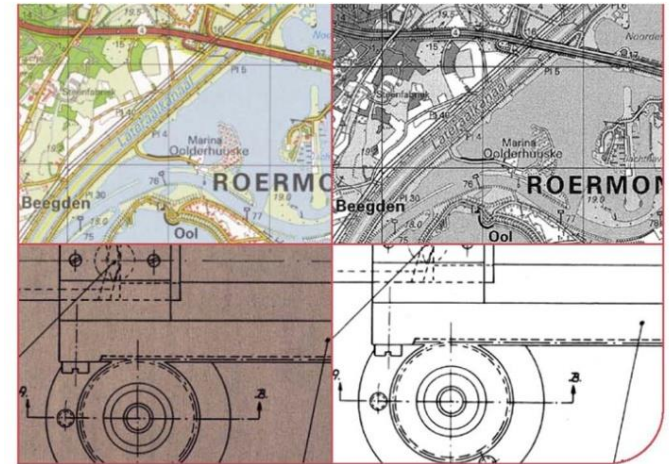
By combining leading technologies with versatile capabilities, we ensure consistent quality across all formats.

Partners



Canon

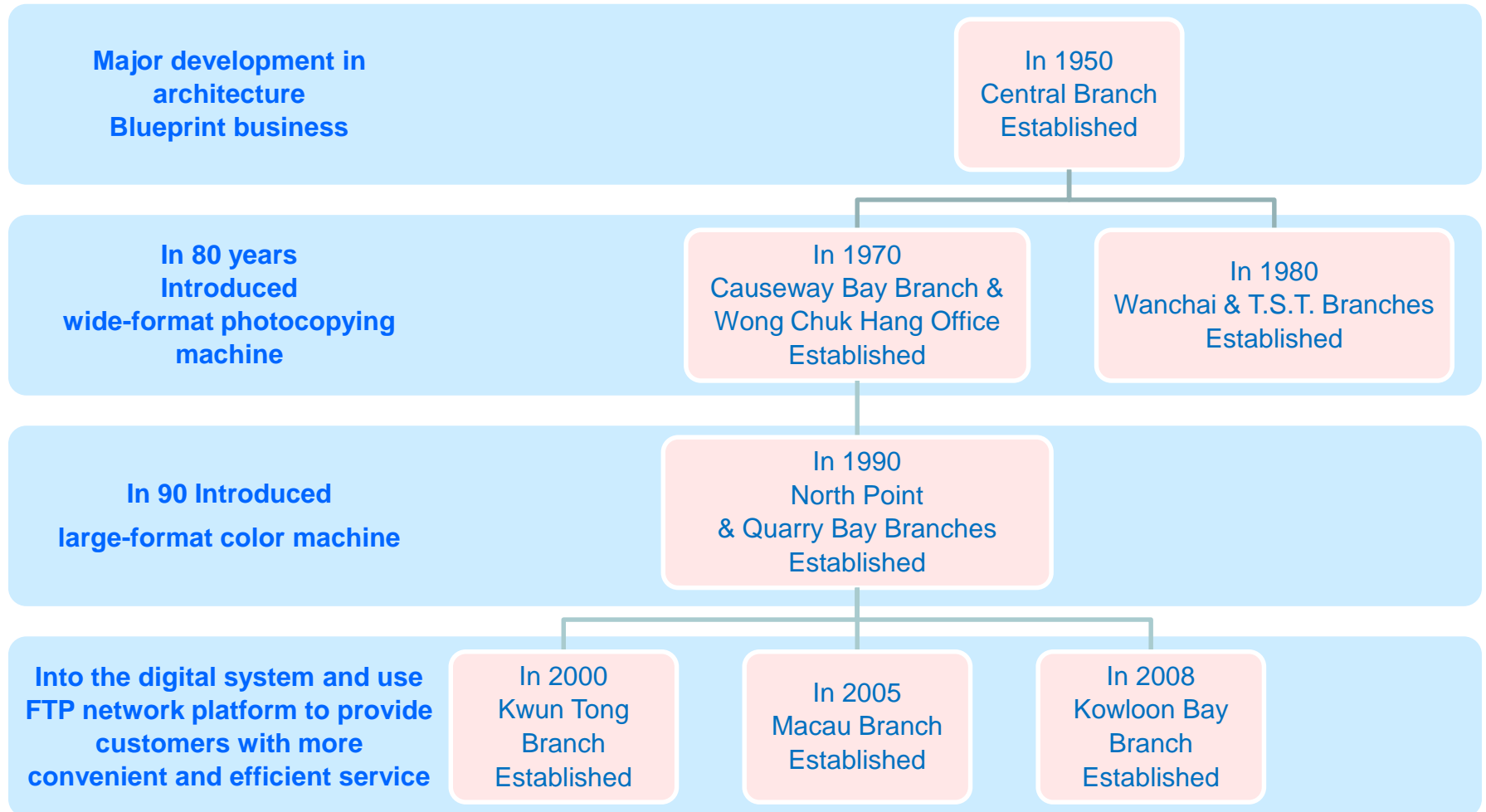
FUJIFILM
Value from Innovation





馬景記
Ma King Kee

Ma King Kee History





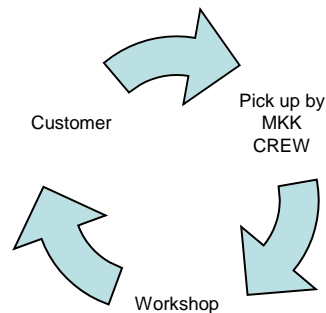
馬景記
Ma King Kee

External Service

With 10 branches across Hong Kong and Macau, we offer convenient access to services like plotting, photocopying, binding, and digital outputs. Branches back each other up to ensure no delays—get what you need, where you need it, on time.

Our dedicated delivery team provides twice-daily service to construction sites, airports, and remote areas. With 30+ couriers, we handle time-sensitive materials promptly, anywhere.

Reliable. Accessible. Efficient. That's how we keep your projects moving.





馬景記
Ma King Kee

Services

影印中心 Copy Centre
圖則影印 Plan Copying
彩印輸出 Color Output
電腦描圖 Computer Plotting
數碼掃描 Digital Scanning
噴畫服務 Inkjet Printing
裝裱展板 Board Mounting
貼紙膠貼 Label / Sticker

數碼印刷 Digital Printing
書本印刷 Book Printing
大型過膠 Laminating
各式釘裝 Binding Service
打印紙品 Inkjet Paper
咭片打印 Business Card
設計圖稿 Artwork Design
電腦切割 Computer Die Cut





馬景記
Ma King Kee

Branch Location

(Hong Kong Island)

Central Branch (CT) Tel: 2544 2393

4/F Kai Tak Commercial Building, 66-72 Stanley Street, Central.

Wanchai Branch (LD) Tel: 2529 7961

Shop 6, G/F Rialto Building, 2 Landale Street, Wan Chai.

Causeway Bay Branch (TL) Tel: 2572 5238

Block E3, 2/F Siu Fung Building, 9-17 Tin Lok Lane, Causeway Bay.

North Point Branch (NP) Tel: 2807 2881

Rm. H&J, 2/F King's Centre, 193-209 King's Road, North Point.

Quarry Bay Branch (QB) Tel: 2565 0922

Rm. 906, 9/F., Eastern Harbour Centre, No.28 Hoi Chak Street, Quarry Bay, Hong Kong.



(Kowloon)

Tsim Sha Tsui Branch (TST) Tel: 2314 0682

Rm. 628, Star House, 3 Salisbury Road, Tsim Sha Tsui.

Kwun Tong Branch (KT) Tel: 2797 0402

Unit 6, 11/F Hung Tai Ind. Building, 37-39 Hung To Road, Kwun Tong.

Kowloon Bay Branch (KB) Tel: 2318 1330

Flat 19, 1/F Kowloon Bay Ind. Centre, 15 Wang Hoi Road, Kowloon Bay.



(Macau)

Macau Branch (MAC) Tel: 853 2875 5642

Alm. Dr. Carlo's D'Assumpcao No.258, Edif. Kin Heng Long Plaza 4° andar (I), Macau.

A/C / Godown

Wong Chuk Hang Office (WCH) Tel: 2814 8463

Unit B, 8/F Po Chai Ind. Building, 28 Wong Chuk Hang Road.



Whatsapp 即時查詢
WhatsApp: +852 5596 6366

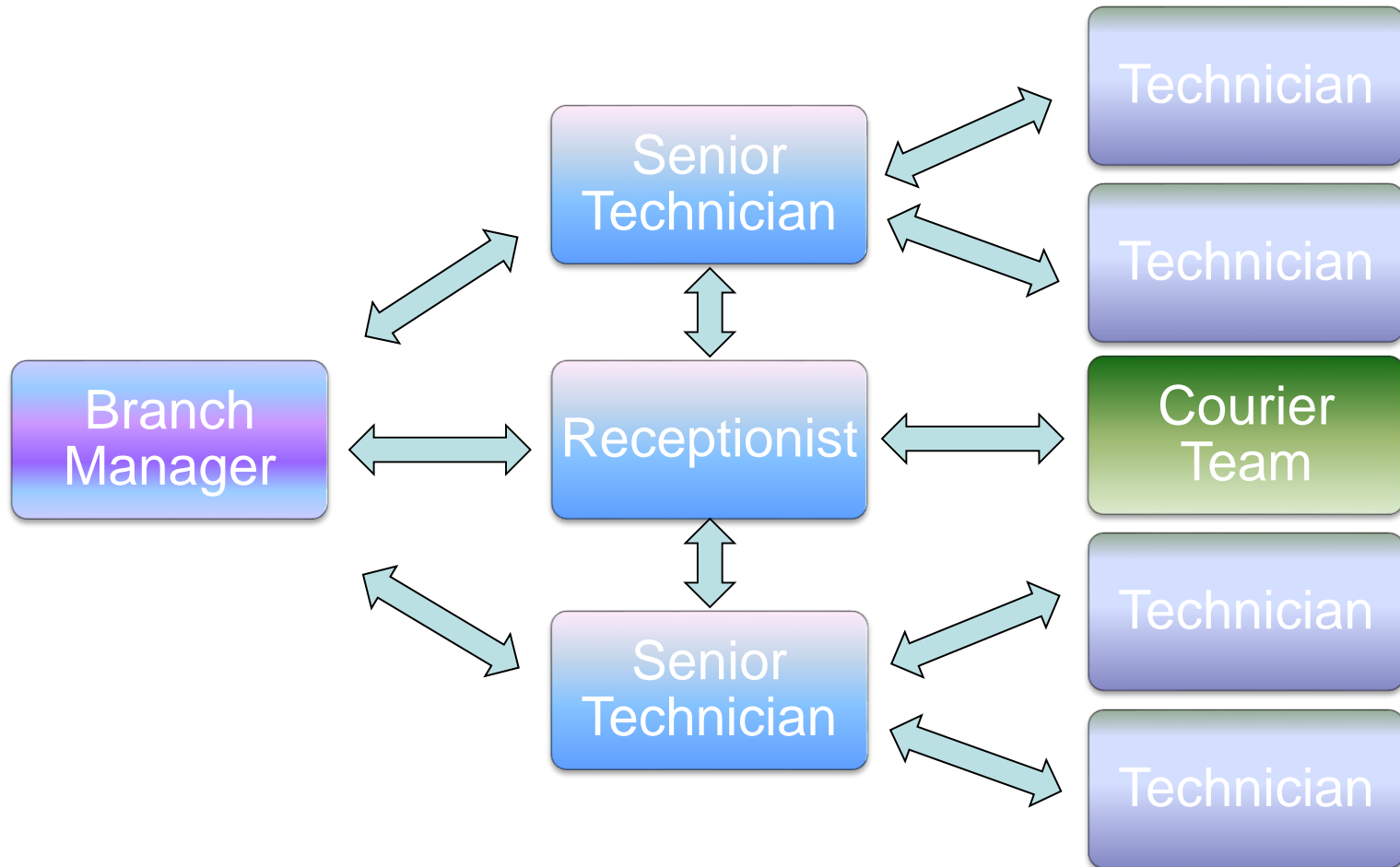


www.makingkee.com



馬景記
Ma King Kee

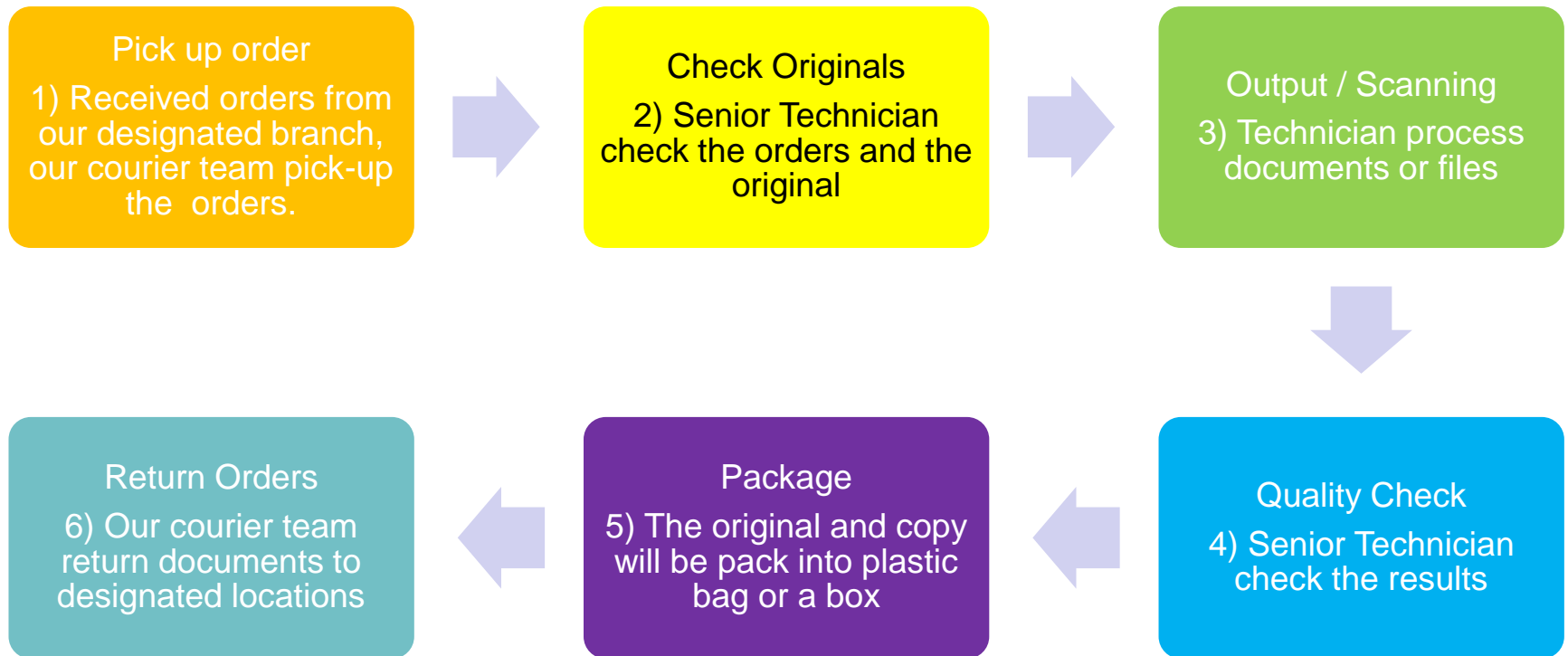
Workshop Structure





馬景記
Ma King Kee

Ma King Kee Work Flow





馬景記
Ma King Kee

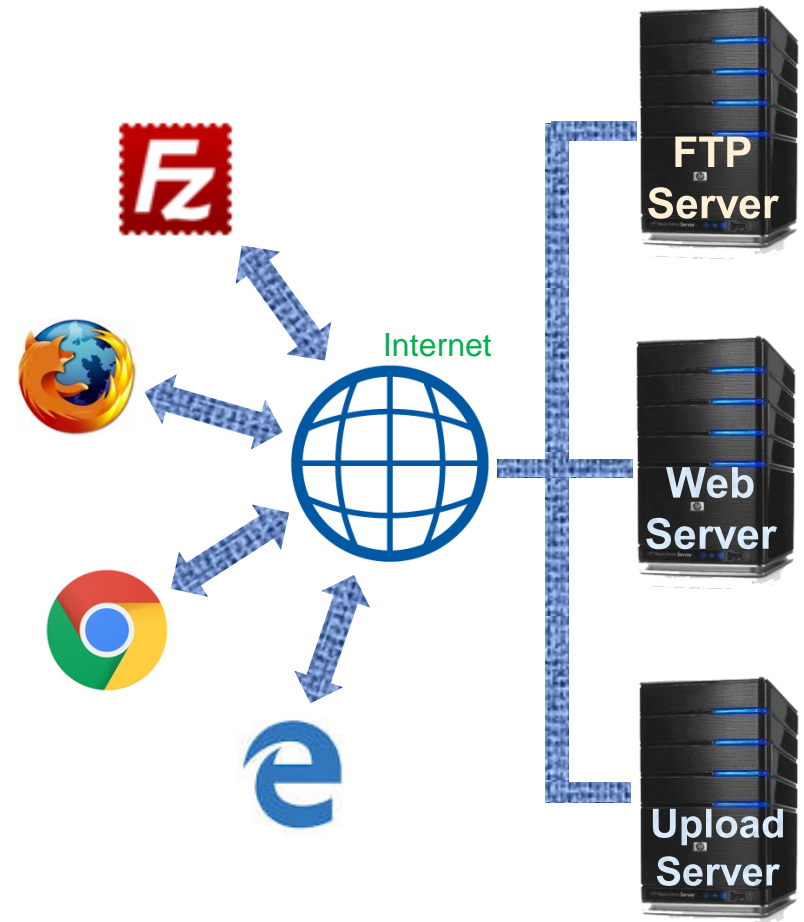
Digital File Transfer Solutions

Web Upload: Easily upload files 24/7 via our website (www.makingkee.com) using any browser—simple, user-friendly, and accessible.

Secure FTP Server: Transfer large/sensitive files fast and freely with our 24/7 FTP server (ftp.makingkee.com). Use FTP clients (e.g., FileZilla) for secure, limit-free uploads.

Dedicated Upload Server: A third option designed for flexibility, meeting all file transfer needs with ease.

Choose your method: web, FTP, or upload server—all optimized for speed, security, and convenience.



**24 hours
Online**



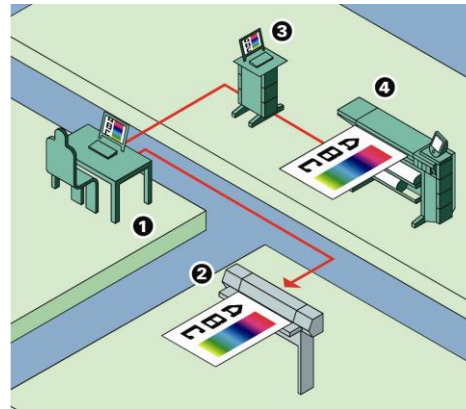
馬景記
Ma King Kee

Printing Workflow

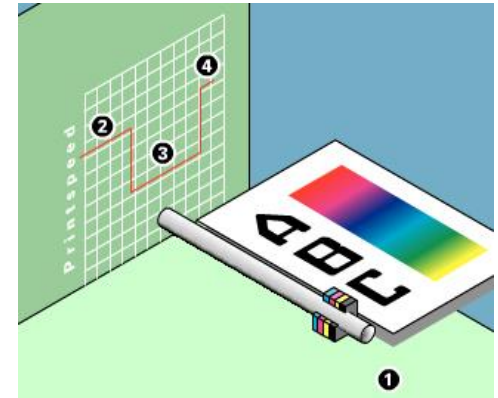
Printing Workflow Diagram



- 1) File creations
- 2) Generic output on third party printer
- 3) Black and White / Color management option to create simulation
- 4) Simulated third party output on our printer



- 1) Paper transport
- 2) Print speed for lines and text
- 3) High print speed for area fills
- 4) Back to maximum speed for lines and text





馬景記
Ma King Kee

Scanning workflow

Scanning Workflow Diagram



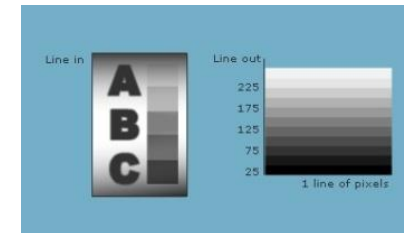
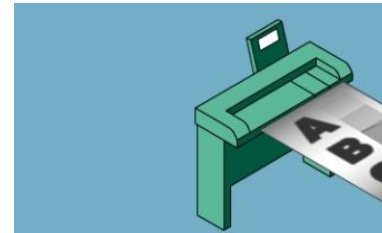
Black and white

The paper original is fed into the scanner and scanned line per line.

Each scanned image line is convert on a scale of 0-255.

This generates the 256 grey scale image

(image date in 8-bit form, representing 256 grey scales per pixel)

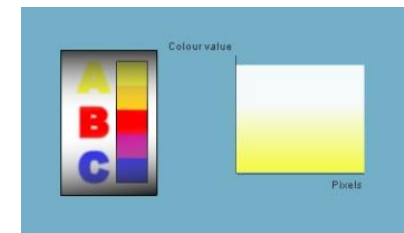
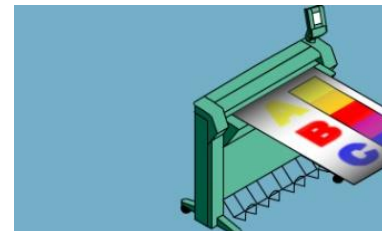


Color

The Original is fed into the scanner and scanned line by line. Each pixel is converted on a scale of 0 to 255 for red, for green and for blue.

This generates a 24-bit RGB image

(256 levels per color requires 8 bit per color)





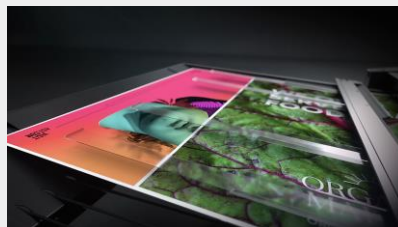
馬景記
Ma King Kee

About Hewlett Packard



HP PageWide XL Pro printers

- Grow into new short-term applications with HP's fastest large-format printer¹
- Fast printing up to 1100 ft² or 1,000 B1 posters per hour.
- Up to 6 rolls
- 5 Litre water-based HP pigment inks (C, M, Y, K)
- Save your operator's time with the easy-to-maintain system and user-replaceable printheads.
- Use a variety of sizes of paper, **cardstock**, and **boards**—from **A2 up to B1**, and **thickness up to 3/8 in (10 mm)**.
- Use responsibly sourced FSC®-certified papers, make recyclable prints, enjoy water-based HP pigment inks.





馬景記
Ma King Kee

About **FUJIFILM**
Value from Innovation

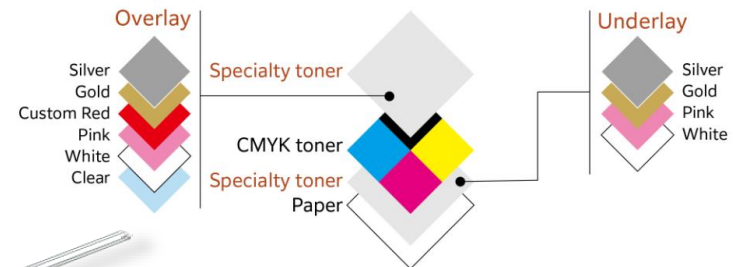
Revoria Press PC1120

- Superior productivity with **high-speed printing of 120 ppm** even when printing in **6 colours**.
- High-definition expression with high-output resolution at **2400 x 2400 dpi**.
- High-performance print server that maximizes print engine productivity.
- Supports a broad range of stocks: **52 gsm - 400 gsm** paper and paper size from a minimum **98 x 148 mm** and **up to 330 x 1200 mm**.
- Various feeding and finishing options to streamline workflow from print to post-press
- **1 pass 6-colour** print engine
- In addition to CMYK toner, the press **can load a maximum of two specialty toner stations**.
- For specialty toner, choices of *Clear, Gold, Silver, White, Pink and Custom Red*^{*1*2} toners are available.
- By overlaying CMYK on Silver or Gold, you can print various **brilliant metallic colours**.
- The rich colour expressions created by the **6-colour print engine** can expand your business



Revoria Press PC1120

6-colour print engine brings expressive power to digital





馬景記
Ma King Kee

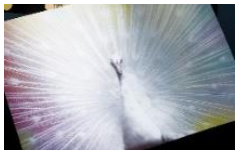
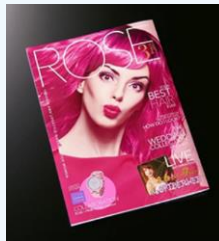
About **FUJIFILM**
Value from Innovation

Iridesse™ Production Press

- **One-pass 6-colour print engine** enabling rich color expressions that could not previously be achieved with digital printers.
- Underlay with **specialty dry ink** realises offset-like metallic colours.
- *Gold, Silver, White, Clear and new Pink dry inks*, bring new possibilities of design expression.
- **High printing resolution** that realises high-definition images.
- Fine expression of texts, thin lines, and gradations with the **1200 x 1200-dpi x 10-bit rip rendering**.
- Industry-leading flexibility with the support for lightweight and heavyweight stocks from **52-400gsm**.
- Supporting a variety of paper sizes including postcards and banners.



Mixture of **pink dry ink** with CMYK colors will enable printing *orange, red, violet and other colors* with a vibrancy that cannot be achieved with CMYK colors alone.





馬景記
Ma King Kee

About **FUJIFILM**
Value from Innovation

Revoria Press SC285S / SC285

- **CMYK+ Specialty toners** are available in *gold, silver, clear, pink, and textured paper toner*.^{*} Gradations, such as halftones, are reproduced more smoothly and beautifully for more even blue skies and skin tones.
- The compact, **high-image-quality LED printhead** delivers **high-resolution** output at **up to 2,400 x 2,400 dpi** for sharp lines and images, enabling high definition printing.
- Supports **paper sizes**, from a minimum of 90 x 146 mm **up to 330 x 660 mm**, with optional **banner sheet printing** (single sided) **up to 330 x 1,300 mm**. **Paper weights** flexibility from lightweight **52 gsm** to heavyweight **400 gsm**.
- Print beautifully even on textured paper
- Reliable paper feed across various types of paper^{*}



Next Gen Technology.
Next level CMYK⁺ Inspiration.
Revoria Press SC285S



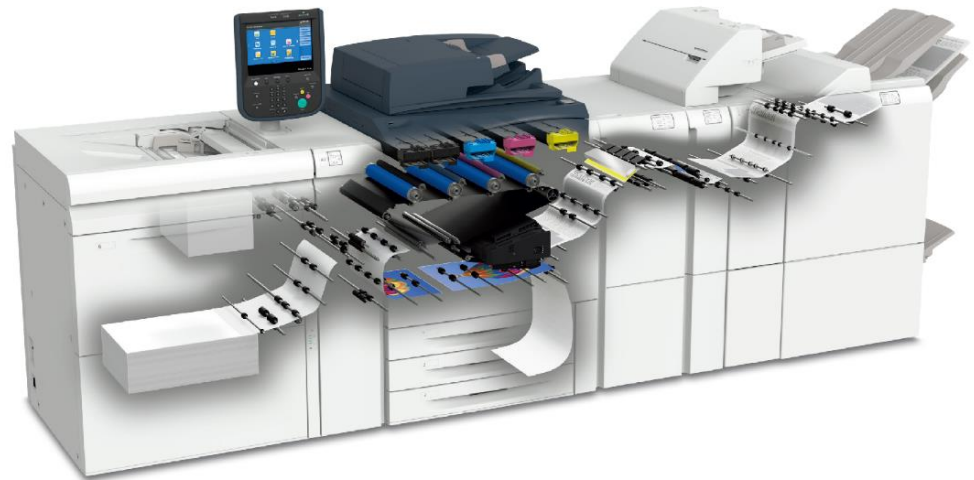
馬景記
Ma King Kee

About **FUJIFILM**
Value from Innovation

Versant™ 180 Press

The Versant™ 180 Press prints faster (80 ppm) on more media types, and delivers the Fuji Xerox innovation advantage with more standard features, a powerful performance option and efficiency boosting workflows to keep jobs moving with less wasted time and materials.

- Paper weight – **from 52 to 350 gsm**
- Paper sizes **up to 660 mm in length**
- **Automated duplex scanning** at a resolution of **600 x 600 dpi** at **up to 200 ipm**
- **Copying at 2400 x 2400 dpi** at speeds of **up to 80 ppm** through the Duplex Automatic Document Feeder



FINISHING APPLICATIONS



Sort and Collate



Staple



Hole Punch



Basic Punch



Booklet



2-Sided Trim



Z-Fold



Tri-Fold



Tabloid Z-Fold



Half-Fold



Square Fold



Face Trim





馬景記
Ma King Kee

About **FUJIFILM**
Value from Innovation

Versant™ 80 Press

- **Print on a wider variety of stocks.**
- The Versant™ 80 Press handles a wide selection of media – **from 52 to 350 gsm** – so you can produce an impressive range of job types.
- **Print on specialty media and envelopes.**
- Give your customers the advantage of more effective direct mail campaigns with the ability to print on envelopes. Surprise and delight with the **ability to print on specialty media** like *labels, business cards, glossy brochures, durable / synthetic papers, greeting cards, tabs, embossed, polyesters* and more.
- **Maintaining image quality on a range of stocks**
- Equipped with a compact belt fuser, the Versant™ 80 Press allows you to **maintain excellent image quality on stocks up to 350 gsm**. Our breakthrough fuser technology maintains uniform heat and pressure optimise image quality at higher speeds, while Emulsion Aggregation (EA) Low Melt Toner - with a new gloss formulation - fuses to a greater variety of stocks with a smooth, offset-like finish.





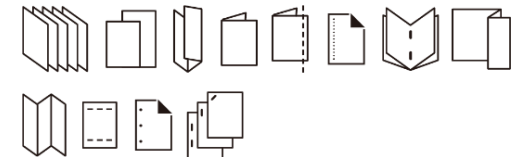
馬景記
Ma King Kee

About **FUJIFILM**
Value from Innovation

B9125 Series Copier

- **Fast print speeds** of **up to 125 pages** per minute
- Simplex or duplex printing
- Wide range of **paper weights** from lightweight paper of **52 gsm** to heavyweight paper of **350 gsm**. **Paper sizes** ranging from **A6 to 330.2 x 488 mm** are available.
- Up to 1200 x 1200 dpi RIP resolution and **up to 2400 x 2400 dpi print resolution** with halftone screen 106 lpi (default) or 150 lpi (high quality mode) Color scanning with 600 x 600 dpi with 8-bit gray (256 shades) scan resolution produces copy output that truly matches the original
- A fast single-pass, dual-head color **scanner** copies or converts pages to widely used digital formats at **speeds up to 270 images per minute (ipm)**
- Scan to Email with Mail Delivery Notification
- Scan to Network File Server
- 250-sheet Single-pass Duplex Automatic Document Feeder

FINISHING APPLICATIONS





馬景記
Ma King Kee

About **FUJIFILM**
Value from Innovation

Revoria Press E1136 / E1125 / E1110 / E1100

- Outstanding print speed of **136 ppm***.
- **High Capacity Feeders** and **High Capacity Stacker** make continuous mass printing possible.
- Offering the latest finisher lineup. Cover insertion, three-sided trim, and Saddle stapled booklet with Square Back supported.
- **Simple Image Quality Adjustment (SIQA)** makes alignment adjustment easy.
- Equipped with various copy and scan functions useful for office operation.

生產型數碼印刷系統

黑白量產印刷的新領域





馬景記
Ma King Kee

About Canon

Colours Without Boundaries



imagePROGRAF GP-540

The World's First¹ Large Format Printer with Aqueous Pigment Fluorescent Ink

- The **44"** **graphics** printer with **PANTONE™²** calibration delivers an extremely wide colour gamut and vibrant colours to create compelling advertisements and posters enhanced by fluorescent colours.
- Ideal for eye-catching posters and print proofing
- **10 colours + fluorescent pink ink**

imagePROGRAF PRO-541 / PRO-561

- Captures the imagination of every professional photographers with its finesse in vivid colours reproduction and stunning print quality.
- **12-colour LUCIA PRO pigment ink**
- Perfect for **high quality fine art and photography prints**
- Robust security, extensive suite of software and solutions

imagePROGRAF PRO-541

44"



imagePROGRAF PRO-561

60"



馬景記
Ma King Kee

About Hewlett Packard



HP Latex 335 Print and Cut

Gain versatility and enjoy convenient printing of indoor and outdoor jobs with the HP Latex 335 Printer. This affordable printer delivers print jobs fast, using healthier Latex water-based inks and produces durable, scratch-resistant prints comparable to hard-solvent inks.

Features:

- Up to **1200 x 1200 dpi**
- HP Latex Printing Technologies
- **Water-based HP Latex Inks**
- 7 (black, cyan, light cyan, light magenta, magenta, yellow, HP Latex Optimizer)
- 6 (2 cyan/black, 2 magenta/yellow, 1 light cyan/light magenta, 1 HP Latex Optimizer)

Applications:

(Indoor / outdoor)

Vehicle graphics

Exhibition and event graphics

POP/POS

Labels and stickers

Wall decals

Posters

Floor graphics

film, Light boxes

Exterior signage

Window graphics





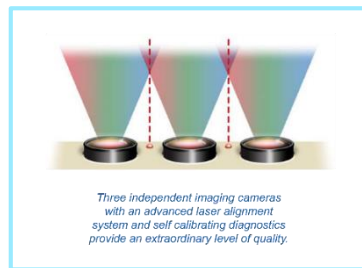
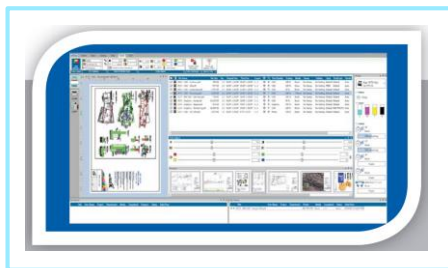
馬景記
Ma King Kee

KIP Scanner



KIP 2300 CCD SCANNING SYSTEM

- The new KIP 2300 high productivity scanner sets a uniquely high standard for speed, quality and flexibility in a digital image capture system.
- Outstanding image quality is delivered through the innovative use of bright white LED light sources for illumination and **600 x 600 dpi** image capture resolution.
- The KIP 2300 is a **high speed scan** solution that provides world-class workflow flexibility through its ability to scan face up or face down and scan thick mounted originals and loose sheets of paper from a single unit.
- The KIP 2300 scanner is powerful, with image **capture speeds from 5 ips to 12 ips in monochrome (dependent on dpi) and 2 to 6 ips in color**. The image capture area is up to **36 in. wide**, yet originals up to 42 in. wide may be fed through the scanner.





馬景記
Ma King Kee

About Hewlett Packard



HP HD Pro 42-in Scanner

Accurately reproducing artwork, maps, technical drawings, and photos in color and black-and-white, and building an efficient print-scan-copy solution.

- Reproduce everything from technical documents to graphics—even damaged originals—with **CCD scanning** technology.
- Create large-format color and monochrome scans **up to 42-inches (1067-mm) wide**
- Produce incredibly accurate and high-quality **scans with 1200 dpi optical resolution**.
- Easily share and collaborate—scan to HP SmartStream software, email, USB, network folders, and HDDs.
- Speed up to **15 cm/sec (color, 200 dpi)**; up to **33 cm/sec (grayscale, 200 dpi)**
- Can scan media **thickness 15mm**
- Support format PDF, TIFF, JPEG, JPEG2000, DWF, CALS (B&W); multi-page PDF generation





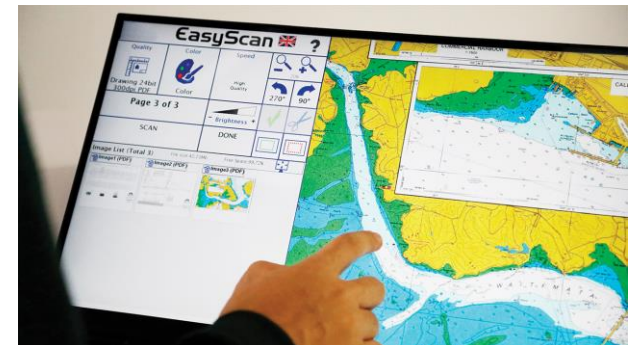
馬景記
Ma King Kee

About Canon

Large Format Scanners

Canon Scanner Professional II

- The Scanner Professional II makes scanning easy with its large, intuitive user interface. Based on CCD technology, the Scanner Professional standard **scans up to 48 inch** to enable A0/E-size landscape scanning.
- Superb image quality with up to **1200x9600 dpi** max resolution. Its high-end CCD technology produces impressive results every time.
- Scan speeds **up to 23m/min** and have improved by up to 70% across all resolutions, compared to previous version.
- The **22-inch colour touch screen** provides users an intuitive scan workflow with detailed scan previews.



**First class productive scanning
for professionals**



馬景記
Ma King Kee

About es-te



estefold 4210

The high performance offline Folding System

estefold 4210 shows its full strength when plans from different printers have to be folded quickly with **outstanding precision and speed**.

Only a few minutes practice are sufficient to utilize its full potential.

- The fold **speed is 19 m/min**
- The fold **tolerance is ≤ 1 mm**
- The max. input format is **930 mm wide and 6000 mm long**

estefold 4210 is perfectly suited for medium volumes from different printers.



estefold 4210

High Performance Offline Folding



馬景記
Ma King Kee

About Epson **EPSON**
EXCEED YOUR VISION

Epson Perfection V800 Photo

- The Dual Lens System is capable of resolutions up to **6400 dpi** (Film scanning using the film holder) with an Optical Density of 4.0 Dmax for film scanning and 4800 dpi for reflective scanning
- **Automatically remove dust and scratches** — Digital ICE Technologies remove many surface defects from film.
- ReadyScan® LED light source — for fast scans with **no warmup time required**
- Equipped with film holders for **35mm strip film** or mounted film, **6 x 20cm** medium format film, **4" x 5"** large format film and a film area guide for scanning up to **8" x 10"** transparency, experience versatility and ease in your scans
- **Backlight Correction** helps to reduce interference from background light by correcting shadows, creating a clearer and sharper image.





馬景記
Ma King Kee

About GRAPHTEC

Flatbed Cutting Plotters

FCX4000 achieves **high quality cutting** with improving of the quality and accuracy by enhancing rigidity of the sliding mechanism and the driving system.

It is the best **flatbed type** cutting plotter that has a high usability and productivity equipped with new functions.

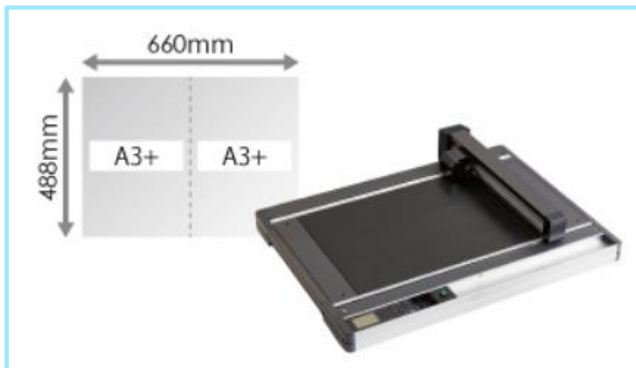


Speed

750
mm/s

Max force

5.88N
(600gf)



Creasing



Perforation



Kiss cutting



Kiss cutting
and
Perforation



馬景記
Ma King Kee

Thank You